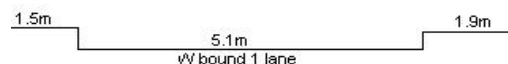
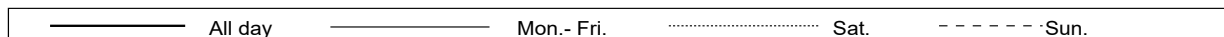
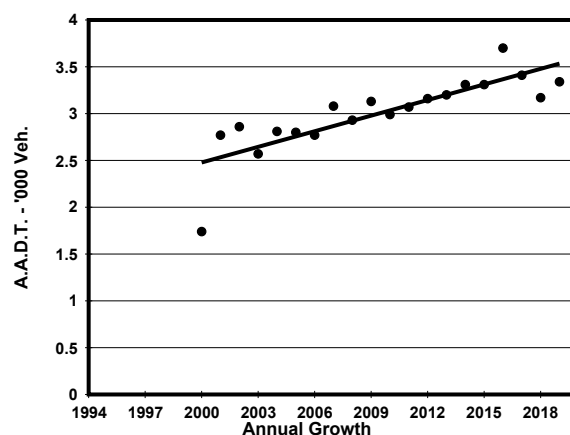
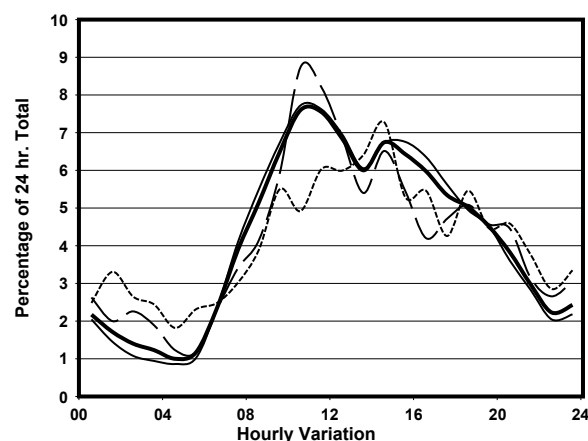
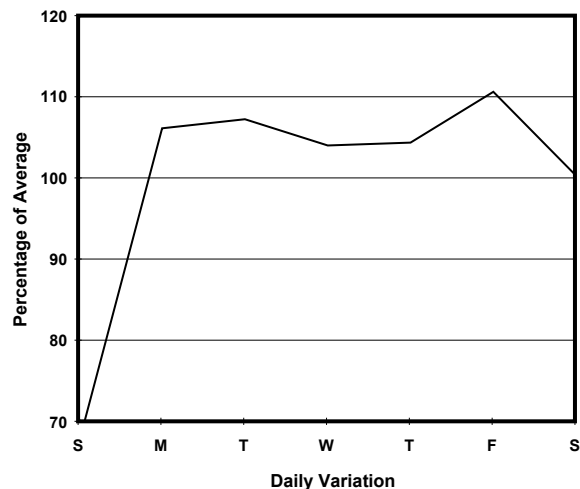
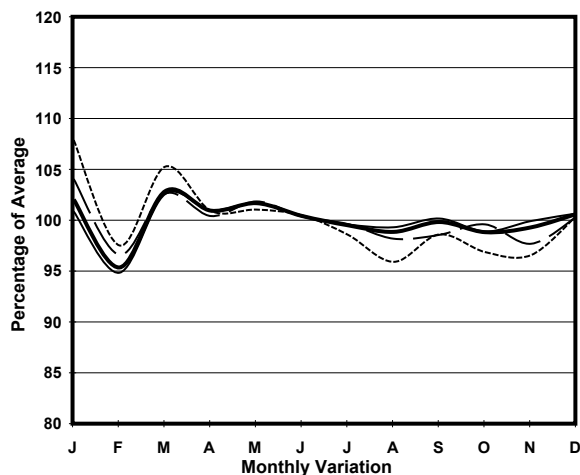


YEAR 2019
 COVERAGE (B) STATION 2402
 ROAD NETWORK MINOR
 ROAD TYPE LOCAL DISTRIBUTOR

LINK WING LOK ST (from MORRISON ST to DES VOEUX RD
 C)



1. TRAFFIC FLOW VARIATION AND GROWTH



2. TRAFFIC CHARACTERISTICS (BY DIRECTION)

Parameter	All - Day	Mon. - Fri.	Sat.	Sun.
WEST BOUND				
A.A.D.T.	3340	3620	3410	2300
R 12 / 24 - %	73	75.1	68.6	63.5
R 16 / 24 - %	86.6	88.1	83.5	79.2
AM Peak Hour	0900-1000	0900-1000	0900-1000	0900-1000
One-way flow at AM peak hour	220	240	200	130
T - % (AM)	-	-	-	-
PM Peak Hour	1600-1700	1600-1700	1800-1900	1600-1700
One-way flow at PM peak hour	200	230	170	130
T - % (PM)	-	-	-	-
Prop.of commercial vehicles - 16 hr.	-	-	-	-
 A.A.D.T.	-	-	-	-
R 12 / 24 - %	-	-	-	-
R 16 / 24 - %	-	-	-	-
AM Peak Hour	-	-	-	-
One-way flow at AM peak hour	-	-	-	-
T - % (AM)	-	-	-	-
PM Peak Hour	-	-	-	-
One-way flow at PM peak hour	-	-	-	-
T - % (PM)	-	-	-	-
Prop.of commercial vehicles - 16 hr.	-	-	-	-

3. OTHER INFORMATION AND COMMENT

4. Vehicle classification and occupancy - Monday to Friday

Time		Class of vehicle									
		Motor Cycle	Private Car	Taxi	Private LB	PLB	Goods veh.		Non Fr. Bus	Fr. Bus	
							Light	M & H		SD	DD
0700-0800	Pro	2.9	14.7	47.1	0.0	0.0	32.4	2.9	0.0	0.0	0.0
	Ocp	1.0	1.4	1.8	0.0	0.0	1.5	2.0	0.0	0.0	0.0
0800-0900	Pro	5.2	31.0	46.6	1.7	0.0	12.1	3.4	0.0	0.0	0.0
	Ocp	1.3	1.1	1.1	1.0	0.0	1.3	1.0	0.0	0.0	0.0
0900-1000	Pro	3.8	51.9	32.9	0.0	0.0	11.4	0.0	0.0	0.0	0.0
	Ocp	1.0	1.3	1.8	0.0	0.0	1.6	0.0	0.0	0.0	0.0
1000-1100 Peak hour	Pro	3.9	39.0	32.5	1.3	0.0	23.4	0.0	0.0	0.0	0.0
	Ocp	1.0	1.4	1.5	4.0	0.0	1.5	0.0	0.0	0.0	0.0
1100-1200	Pro	3.5	50.9	22.8	0.0	0.0	21.1	1.8	0.0	0.0	0.0
	Ocp	1.0	1.4	1.7	0.0	0.0	1.5	2.0	0.0	0.0	0.0
1200-1300	Pro	3.9	39.2	41.2	0.0	0.0	15.7	0.0	0.0	0.0	0.0
	Ocp	1.0	1.5	1.8	0.0	0.0	2.1	0.0	0.0	0.0	0.0
1300-1400	Pro	2.2	33.3	35.6	0.0	0.0	28.9	0.0	0.0	0.0	0.0
	Ocp	1.0	1.4	1.3	0.0	0.0	1.7	0.0	0.0	0.0	0.0
1400-1500	Pro	2.9	56.5	18.8	0.0	0.0	20.3	1.5	0.0	0.0	0.0
	Ocp	1.0	1.4	1.5	0.0	0.0	1.3	1.0	0.0	0.0	0.0
1500-1600	Pro	0.0	48.6	29.7	0.0	0.0	21.6	0.0	0.0	0.0	0.0
	Ocp	0.0	1.3	1.8	0.0	0.0	1.5	0.0	0.0	0.0	0.0
1600-1700	Pro	1.6	54.0	17.5	1.6	0.0	25.4	0.0	0.0	0.0	0.0
	Ocp	1.0	1.5	1.8	5.0	0.0	1.6	0.0	0.0	0.0	0.0
1700-1800	Pro	4.4	46.7	28.9	2.2	0.0	17.8	0.0	0.0	0.0	0.0
	Ocp	1.0	1.5	1.8	3.0	0.0	1.5	0.0	0.0	0.0	0.0
1800-1900	Pro	8.7	60.9	19.6	0.0	0.0	10.9	0.0	0.0	0.0	0.0
	Ocp	1.0	1.3	1.8	0.0	0.0	2.0	0.0	0.0	0.0	0.0
1900-2000	Pro	8.8	70.6	11.8	0.0	0.0	8.8	0.0	0.0	0.0	0.0
	Ocp	1.3	1.6	2.0	0.0	0.0	1.3	0.0	0.0	0.0	0.0
2000-2100	Pro	2.6	53.8	43.6	0.0	0.0	0.0	0.0	0.0	0.0	0.0
	Ocp	1.0	1.4	1.6	0.0	0.0	0.0	0.0	0.0	0.0	0.0
2100-2200	Pro	20.0	40.0	40.0	0.0	0.0	0.0	0.0	0.0	0.0	0.0
	Ocp	1.0	1.5	1.7	0.0	0.0	0.0	0.0	0.0	0.0	0.0
2200-2300	Pro	12.5	37.5	50.0	0.0	0.0	0.0	0.0	0.0	0.0	0.0
	Ocp	1.5	2.2	1.8	0.0	0.0	0.0	0.0	0.0	0.0	0.0
16 hours	Pro	4.3	46.4	30.9	0.5	0.0	17.3	0.7	0.0	0.0	0.0
	Ocp	1.1	1.4	1.6	3.3	0.0	1.6	1.4	0.0	0.0	0.0

Legend: Pro. Proportion of vehicles in % (Sum may not add up to 100% due to figure rounding)*

Ocp. Average occupancy of vehicles including both driver and passengers*

M&H Medium and Heavy

* All traffic data are collected from combined bounds